



Advising & Mentoring

Do You Have Issues With:

- ▶ **University/School policies?**
- ▶ **The grade appeal process?**
- ▶ **Advisors/Faculty?**
- ▶ **Resolving conflicts?**

REACH OUT TO OMBUDS

UNSURE IF WE CAN HELP?

REACH OUT ANYWAY

Use your Ombudsperson

Talk to a caring person

Helps YOU resolve school issues

Confidential (except by law or policy)

Sooner contact = More effective help

SPECIALIST IN EACH SCHOOL



ACADEMIC SUPPORT



Writing

- Writing Center writingcenter.pitt.edu
- Writing Institute Project Camp
- Dissertation Boot Camp
- Writing Tutors
- National Center for Faculty Diversity and Development academic-support/ncfdd

English Language Support

- English Language Institute eli.pitt.edu

Statistics Consulting

- Department of Statistics statistics-consulting-center

Research

- University Library System library.pitt.edu

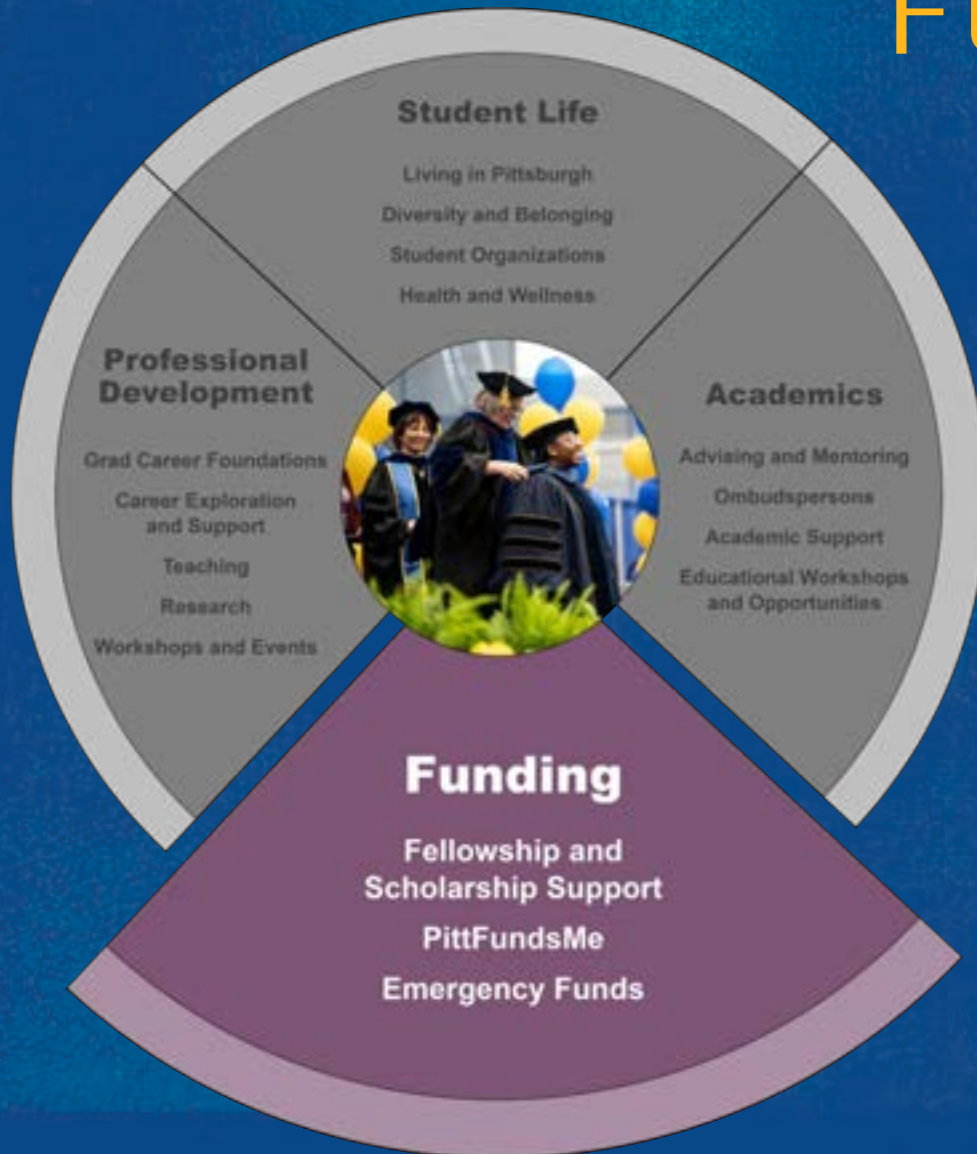
School-based Tutoring and Support

Educational Opportunities across Pitt

- Library Workshops at pitt.libcal.com/calendar
- Center for Teaching and Learning Workshops teaching.pitt.edu
- Center for Creativity creative.pitt.edu
- Open Lab and Maker Spaces library.pitt.edu/services
- Office of Equity, Diversity & Inclusion Workshops calendar.pitt.edu
- Racial Equity Consciousness Institute crsp.pitt.edu/reci
- Add-on Certificate Programs at academics.pitt.edu
- Lectures and Workshops at calendar.pitt.edu



Funding



- Fellowship and Scholarship Support
- PittFundsMe
- Emergency Fund

gradstudies.pitt.edu/funding

PittFund\$Me

- PittFund\$Me connects students with real, relevant scholarships.
- Current students and new incoming students who have committed to Pitt have access to Pitt's searchable scholarship database, PittFund\$Me.
- Log into my.pitt.edu and click on the PittFund\$Me link to access the tool. Respond to questions in PittFund\$Me to discover what you are eligible to apply for and unlock your scholarship matches!

Fellowship Opportunities Website

gradstudies.pitt.edu/fellowship-opportunities

- We encourage students to apply for fellowships and grants available internally from Pitt, as well as from national, international, industrial or foundation sources.
- The Fellowship Opportunities webpage provides a list of some of the major national and internal fellowships available for graduate study.
- For questions or assistance regarding fellowships contact VPGodley@pitt.edu.



The screenshot shows a web browser window with the URL gradstudies.pitt.edu/fellowship-opportunities. The navigation menu includes HOME, ABOUT, ADMISSIONS, FUNDING (highlighted), ACADEMICS, PROFESSIONAL DEVELOPMENT, and STUDENT LIFE. The main content area features the following text:

Department of Energy (DOE) Office of Science Graduate Student Research (SCGSR) Program

The Department of Energy (DOE) Office of Science Graduate Student Research (SCGSR) Program supports graduate students who have reached candidacy and are conducting research in a qualified graduate program by providing a living stipend and transportation costs while the student conducts research at a DOE laboratory or facility. Funding is for three to twelve months.

- **Fields of Study:** STEM
- **Level/Year:** PhD Candidacy
- **Application Deadline:** May and November
- **Award Amount:** Up to \$3,000 per month stipend while at the host DOE laboratory
- **Nationality:** U.S. Citizen and Permanent Resident
- **Website:** [How to Apply](#)
- **Direct Contact:** sc.scgsr@science.doe.gov
- **Additional Information:** Allows students to do part of their research at a DOE laboratory/facility

Fellowships Run Internally at Pitt

- Some prestigious national fellowships require students to apply through the University rather than directly. These fellowships are facilitated through the Graduate Studies Office:
 - Dolores Zohrab Liebmann Fund Fellowship
 - Howard Hughes Medical Institute's Gilliam Fellowships for Advanced Study
 - Google PhD Fellowship Program
 - IBM PhD Fellowship Award Program
- In recent years Pitt graduate students have been awarded the Liebmann and the Gilliam fellowship, including two new Gilliam fellows awarded this year!



Graduate Honors Convocation 2023

Fellowship Application Assistance

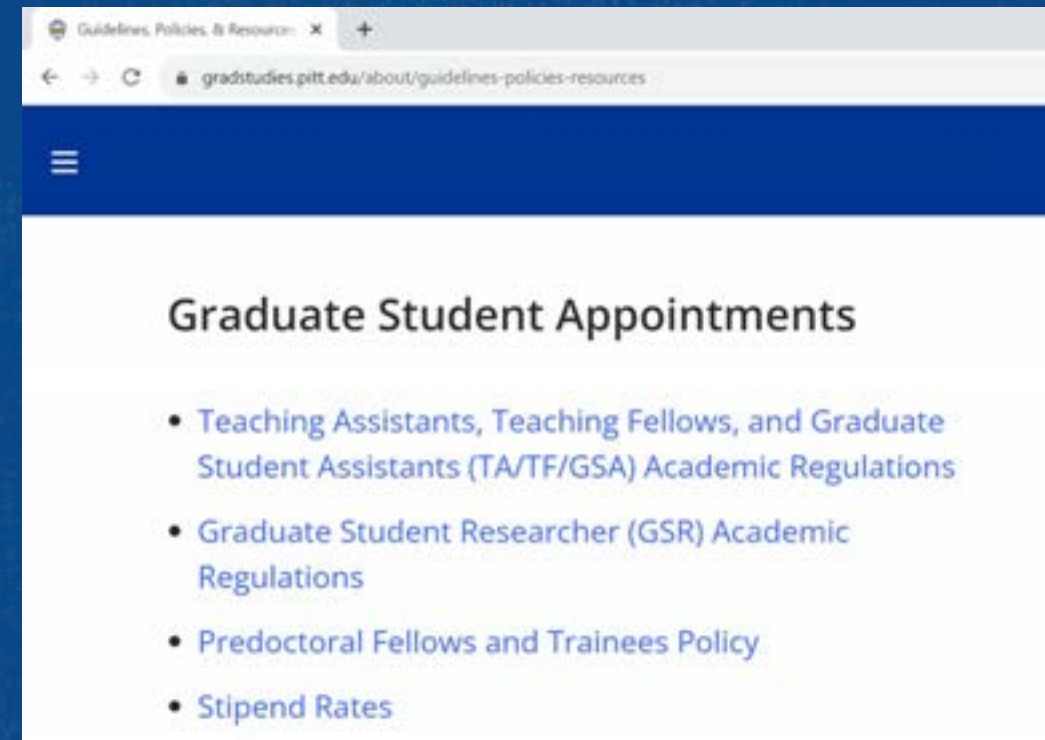
- The David C. Frederick Honors College offers graduate students general assistance preparing fellowship and grant applications.
 - Fulbright, NSF-GRFP, Gilliam, Boren
- For assistance, contact:
 - Lesha Greene
Director of National Scholarships and Post-Graduation Success
leg78@pitt.edu

Graduate Student Appointments

gradstudies.pitt.edu/about/guidelines-policies-resources

- Teaching Assistants/Teaching Fellows
Assist faculty in teaching classes, recitations or labs.
- Graduate Student Assistants
Assist in educational or research mission of the university but do not teach.
- Graduate Student Researcher
Receive funding from external/internal funds while working full time towards degree.
- Predoctoral Fellows and Trainees
Receive funding via internal or external fellowships/grants.

For questions regarding appointments or policies please contact VPGodley@pitt.edu



Student Emergency Fund



The Student Emergency Assistance Fund is available to undergraduate, graduate and professional students who are experiencing a financial barrier based on an emergency situation and when they have exhausted all other available resources.

See the [website](#) for eligibility details.

Professional Development



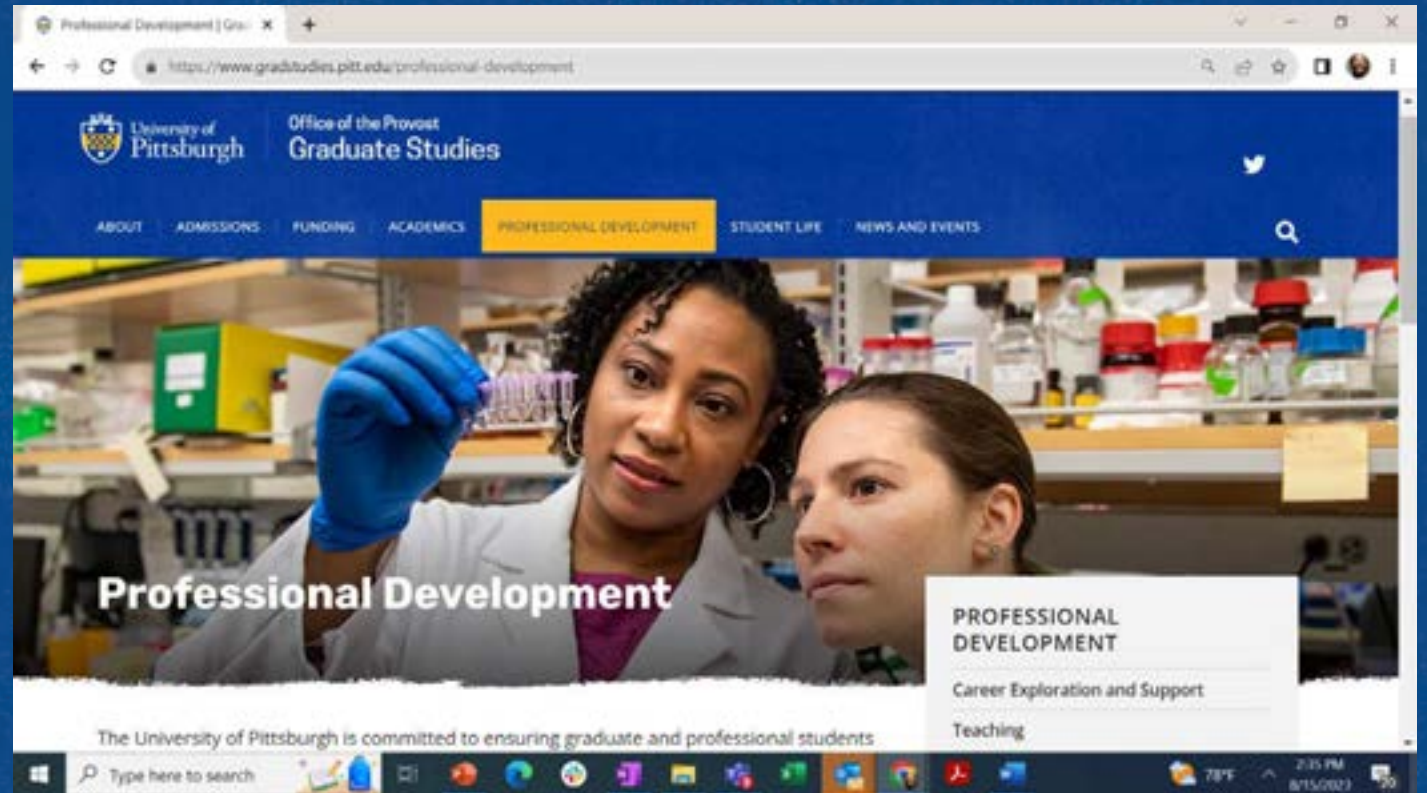
- Grad Career Foundations
- Career Exploration and Support
- Teaching
- Research
- Workshops and Events

gradstudies.pitt.edu/professional-development

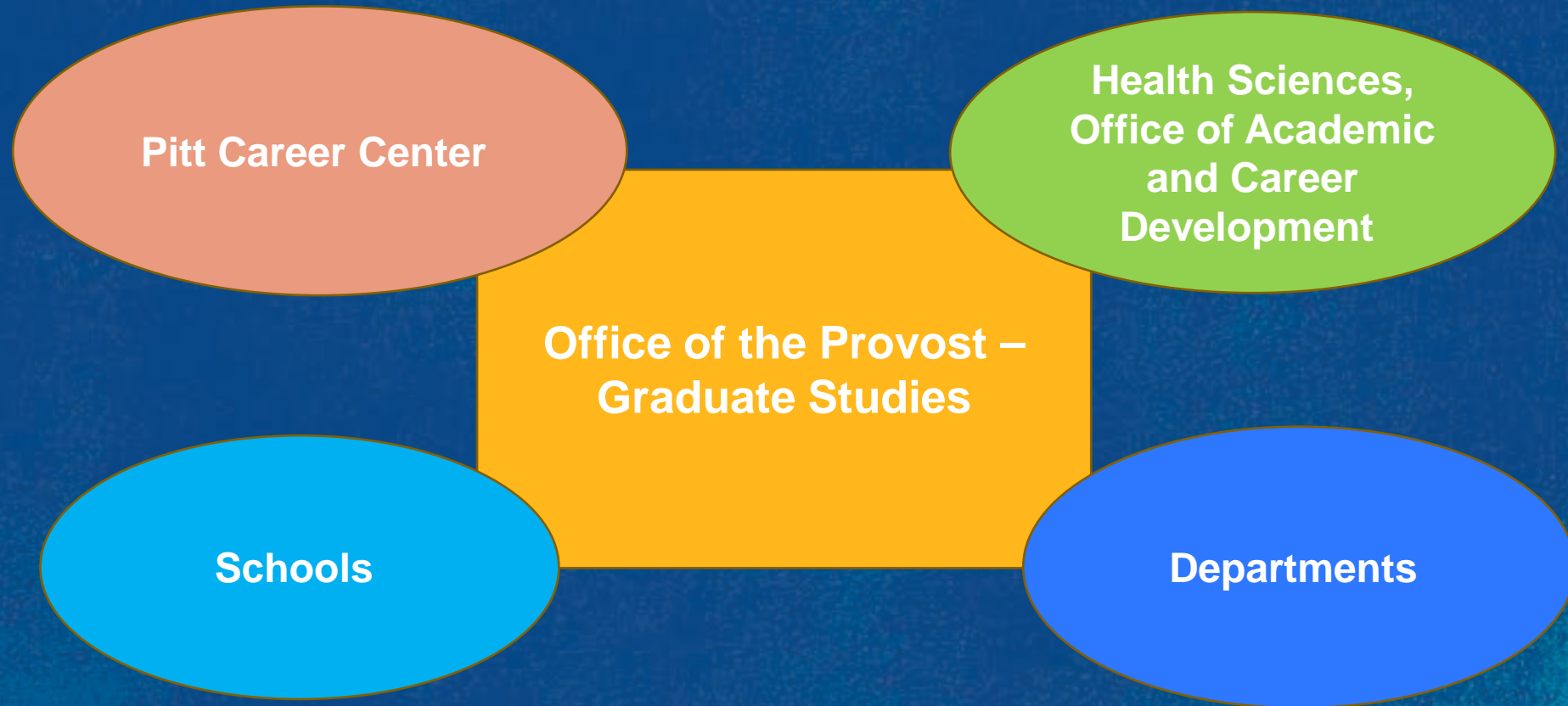
Professional Development



Dr. Treviene Harris
Graduate Career and
Professional Development
Manager, Graduate Studies



Professional Development Support at Pitt



Professional Development Support at Pitt

Pitt Career Center

Drop-in Hours

Resume & Cover Letter
Review

Interview Resources

Health Sciences, OACD

Professional
Development Workshops

Certifications

Symposia

Themed Webinars

Schools and Departments

Teaching Support

Career Advising

Graduate Professional Development

New This Fall!

- ***The Graduate Career Foundations*** –
*Professional Competencies
Online Learning Platform*
- ***Interstride*** –
*International Student Career
Support Services & Global Career Exploration*



Graduate Professional Development Graduate Career Foundations



Research & Analytical Thinking



Communication & Networking



Leadership & Management



Teaching



Self-Exploration & Personal Development



Cultural Awareness

Graduate Professional Development

Graduate Career Foundations

Why is this important?

- Prospective students increasingly choose graduate programs based in part on career preparation and outcomes.
- More doctoral students are pursuing careers outside of academia.
- Employers value and expect professional competencies beyond academic knowledge.

Graduate Professional Development



Interstride | University of Pittsburgh

Visas & Work Permits
The guide to visa types and work permit requirements

Banks & Taxes
A comprehensive guide about opening a bank account and managing your taxes

Relocation
All you need to know about relocating your household goods and pets

Webinar
Jobs for international students
June 15 at 3:00pm - 4:00pm (EDT)

Webinar
Navigating your visa status
June 10 at 3:00pm - 4:00pm (EDT)

The graphic features a central light blue globe with several white rectangular callout boxes containing text and icons. A mouse cursor is pointing at the bottom right of the globe area.

Graduate Professional Development

Career Design Workshop Series

Synchronous & In-person eight-week session

“I really enjoyed doing the assessments at the beginning of the workshops, they provided me with some much-needed clarity.”

“Concrete guidelines and resources provided alongside building Resume/CV was extremely helpful. LinkedIn workshop was of great help.”



Graduate Professional Development

Academic and Non-Academic Career Exploration Resources

- [Aurora, Beyond the Professoriate](#)
- [Coursera](#)
- [Imagine PhD](#)
- [Interstride](#)
- [LinkedIn Learning](#)
- [My IDP](#)
- [Versatile PhD](#)



Professional Development Support

- OTP – Graduate Studies gradstudies.pitt.edu/professional-development
- Pitt Career Center careercentral.pitt.edu
- Office of Academic Career Development (OACD), Health Sciences oacd.health.pitt.edu
- Teaching Support teaching.pitt.edu

Website: pittgpsg.com

Email: GPSG@pitt.edu



GPSG

Graduate & Professional Student Government

Executive Board

President

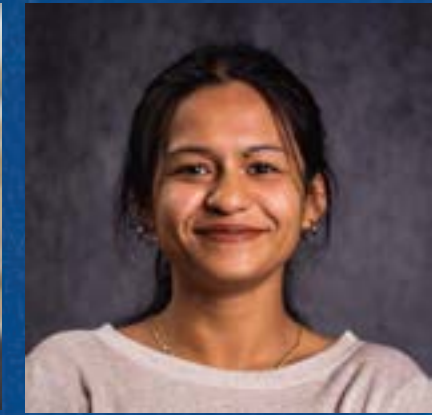
*Executive
Administrator*

*VP of
Committees*

*VP of
Communication*

*VP of
Programming*

*VP of
Finance*



Rithika
Behera

Claire
Dunning

Nike
Ndaumanu

Melinda
Szabo

Justin
Thomas

Varbi
Mridha



Who is GPSG?

- Student government for **ALL** Graduate and Professional students at the University of Pittsburgh!
- We administer half of the graduate student activity fee to provide services and event programming to all graduate and professional students.



Represent all graduate and professional students



What is our mission?

- Improve communication between graduate students and the University
- Represent graduate students on University-wide committees
- Advocate for graduate students at the University, State, and National level
- Provide services to graduate students



Services we provide

- Social Events
- Travel Grants
- Advocacy Grants
- Supplemental Funding
- FREE Legal Services
- Opportunities to serve on University-wide committees



See us again!

- **Pirates Game: End of September**
 - Details to come!
- **First AB Meeting:**
 - September
 - More details will be sent out on social media/emails



Stay connected!



Email: gpsg@pitt.edu



Facebook: [PITT GPSG](https://www.facebook.com/PITTGPSG)



Instagram: [pittgpsg](https://www.instagram.com/pittgpsg)



Website: pittgpsg.com





Welcome to Pitt!